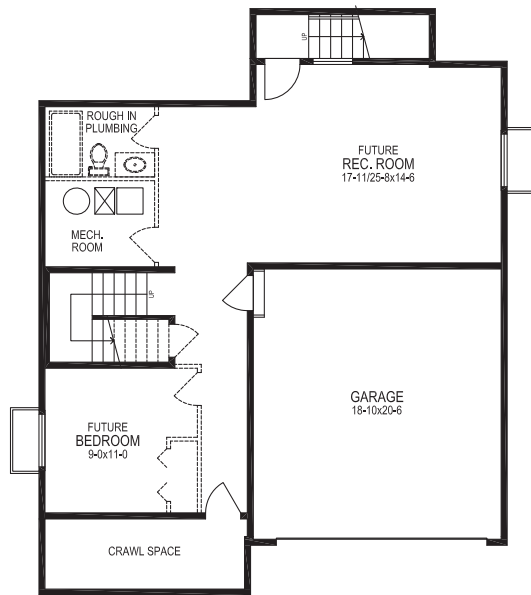
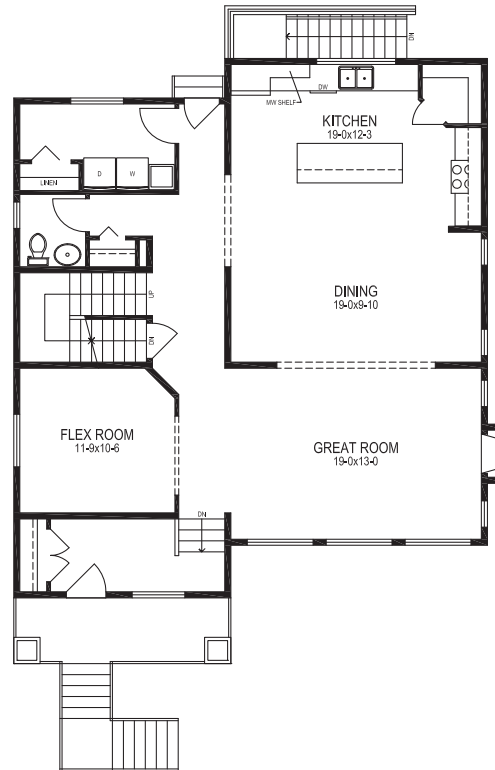


## SYDNEY

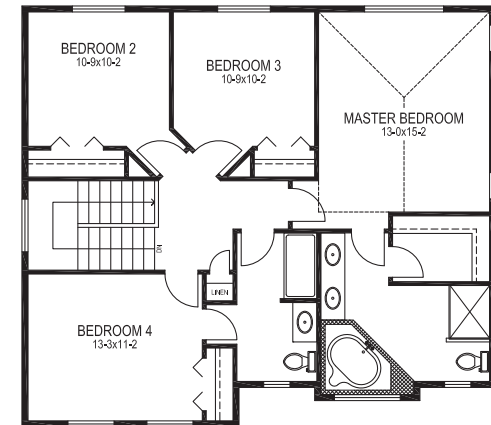
3237 Sq.Ft.(approx): 2389 Finished Sq.Ft. plus 848 Unfinished Sq.Ft.



**LOWER**  
Approx. 848 Sq.Ft. (Unfinished)



**MAIN**  
Approx. 1350 Sq.Ft.



**UPPER**  
Approx. 1039 Sq.Ft.



# SYDNEY

3237 Sq.Ft.(approx): 2389 Finished Sq.Ft. plus 848 Unfinished Sq.Ft.



LEFT ELEVATION



FRONT ELEVATION



In order to maintain the high standards of the development, Vesta Properties Ltd. reserves the right to make modifications and/or substitutions to the building designs, specifications, and features, without notice, should they be necessary. Floor plans, elevations, room sizes, and square footages are based on preliminary architectural drawings and may vary. E. & O.E.